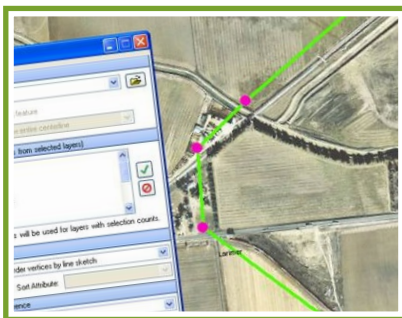




Centerline Design Toolkit

Centerline Design Toolkit Provides a Cost-Effective Way to Quickly Build Linear Models



Centerline Design Toolkit is a comprehensive set of tools, which has been proven to make workflows more efficient and increase worker productivity. This easy-to-implement Esri ArcMap extension provides an extremely cost-effective way to quickly build accurate linear models. Its highly flexible design supports multiple data sources and offers a robust set

of tools that perform complicated linear referencing operations. Yet, it's easy to install and use, plus requires minimal training.

With Centerline Design Toolkit, common geo-processing workflows that used to take hours to perform, now take only minutes! For example, with just a few button clicks you can connect GPS points to create a line, assign 2D or 3D measures, and generate events with stationing. Centerline Design Toolkit not only improves GIS analyst productivity and simplifies the training process, it also simplifies centerline creation.

Key Benefits

- Simplifies the complex, multi-step linear referencing process to save users time and increase productivity.
- Obtains accurate station readouts by following the centerline with the cursor.
- The popular Event Generator streamlines the event creation process, which saves the user precious time and money.
- The Centerline Validator ensures centerline integrity by clearly identifying vertices with duplicate measures or x/y coordinates.
- The Symbology Manager reduces the amount of information on the map so you can focus on the data that interests you.
- Easy to learn and remember, this tool is great for "infrequent users" who do not use it every day, yet need to come up-to-speed quickly when they do use it.

Key Features

- Use ArcMap graphics to display data based on selected centerline(s).
- Uses a right-click menu from the Table of Contents to view or hide specific symbolized categories.
- Creates on-the-fly centerline with stationing and measures (2D/3D).
- Provides an easy-to-read x, y, z, and measure readout.
- Includes an offset for off-centerline readings.
- Quickly locates a point on the centerline based on any station value you enter.
- Outputs to a personal or file geodatabase.

Technical Specifications

- ArcView, ArcEditor, or ArcInfo
- Windows XP or Windows 7
- Windows .NET Framework

About New Century Software

Since 1994, New Century Software has delivered pipeline integrity management software and services to energy transportation companies. With an ideal blend of innovative software solutions and extensive pipeline expertise, New Century Software is uniquely qualified to serve the oil and gas industry. Our flexible solutions empower your organization to manage pipeline integrity data and navigate regulatory compliance ensuring safety and reliability.

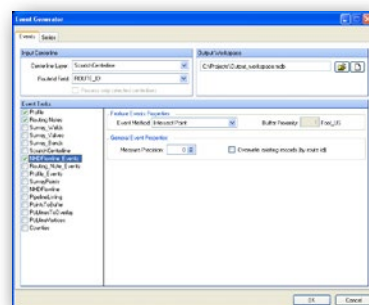


R1604

Product Preview



Create a measured centerline from a variety of vertices sources, including survey features, ILI inspection, and existing centerline data.



Event Generator calculates station and measure from other geographic features along the centerline to quickly generate events.