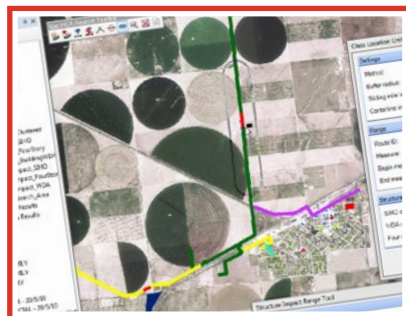




Gas HCA Analyst

Increase HCA & Class Location Accuracy with Gas HCA Analyst



Gas HCA Analyst is a software application that determines how many structures fall within proximity of a pipeline (Class Location) and identifies high consequence areas (HCA) and regulated onshore gathering lines. Pipeline operators and engineering firms use this tool to quickly, accurately, and reliably run the analysis and prepare for submittal to meet DOT regulations.

Gas HCA Analyst's advanced design follows a "show your work" philosophy. This means every Class Location and HCA determination is accompanied by detailed project settings and metadata critical for project validation. Gas HCA Analyst also allows you to pull pipeline data from a variety of databases and generate the results in both tabular and geospatial formats, meeting the diverse needs of various departments that need to review the results.

Gas HCA Analyst increases productivity by automating the analysis and reducing errors that often occur with manual analysis. It saves configuration settings that are unique to your integrity management framework so you can use them in the future to drive consistent results and generate time-based comparisons along the pipeline network.

Key Benefits

- Increases accuracy, reliability, and the speed of analysis.
- Provides an intuitive interface that lets users easily walk through the analysis process.
- Meets the diverse needs of users with its flexibility:
 - Supports all Esri formats for layers containing structure data (feature class, shape file, points, and polygons)
 - Is not data model-dependent (you can connect to any database or no database).
 - Lets you compare analysis results graphically, as features in ArcMap or as tables of information.
- Gives you the ability to create “what-if” scenarios that simulate data changes on the pipeline network to analyze the effects of a proposed action.

Key Features

- Addresses three major DOT regulations to keep you compliant: 49 CFR 192.5 Class Location determinations; 49 CFR 192.903 and 192.905 High Consequence Area identification; and 49 CFR 192.8 Regulated Gathering Line determinations.
- Support for Moderate Consequence Areas analysis.
- Performs both Class Location and HCA analysis within an attribute or geometric network.
- Accesses pipeline data directly from an Oracle, SQL Server, File geodatabase, or Access database, regardless of data model.
- Exports analysis results to tabular files or ArcMap feature classes.
- Stores configuration settings such as database connections, buffers, and structure classification.

Technical Specifications

- ArcView, ArcEditor, or ArcInfo
- Windows XP or Windows 7
- Microsoft .NET

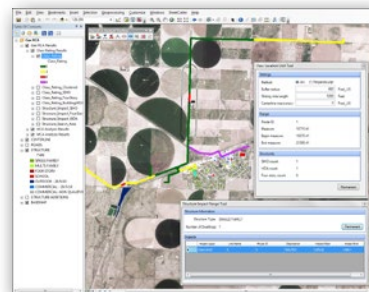
About New Century Software

Since 1994, New Century Software has delivered pipeline integrity management software and services to energy transportation companies. With an ideal blend of innovative software solutions and extensive pipeline expertise, New Century Software is uniquely qualified to serve the oil and gas industry. Our flexible solutions empower your organization to manage pipeline integrity data and navigate regulatory compliance ensuring safety and reliability.



R1611

Product Preview



Easily find the Structure Impact Range and Class Location designation for an area.



Pre-configured templates in Crystal Reports enhance the reporting and output options.